



January 1997

EMBARGO: 11:30 AM (CANBERRA TIME) TUES 28 JAN 1997

Business Indicators

Australian Capital Territory

NOTES

FORTHCOMING ISSUES

<i>ISSUE</i>	<i>RELEASE DATE</i>
February 1997	24 February 1997
March 1997	24 March 1997

SYMBOLS AND OTHER USAGES

ACT	Australian Capital Territory
n.a.	not available
n.p.	not available for publication
p	preliminary
—	nil or rounded to zero

INQUIRIES

For further information about statistics in this publication and the availability of related unpublished statistics, contact Kingsley Green on Canberra (06) 207 0286 or any ABS State office.

For information about other ABS statistics and services, please refer to the back of this publication.

Dalma Jacobs
Regional Director
Australian Capital Territory

SUMMARY OF FINDINGS

UPDATED SERIES

Series updated since the December 1996 issue are: population; State accounts; labour force, job vacancies, industrial disputes; business expectations; housing finance, building approvals, building commencements; retail turnover; and new motor vehicle registrations. A feature article on job search experience of unemployed persons in the ACT is included on page 7.

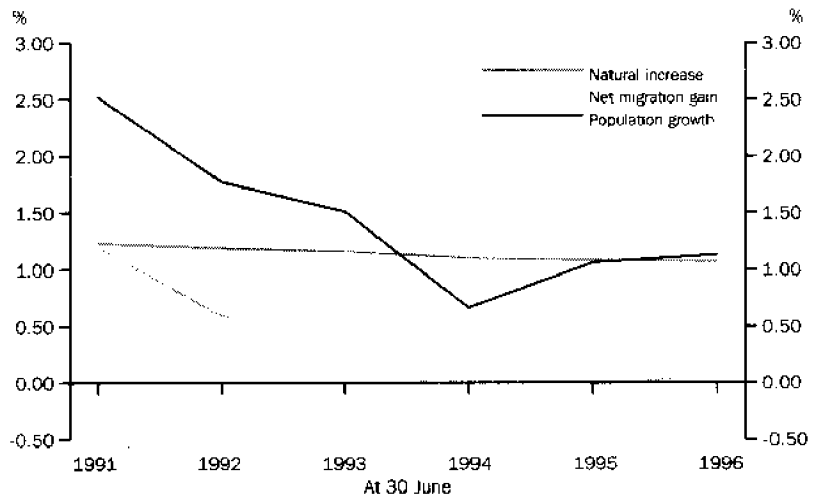
NOTABLE MOVEMENTS

- Population** The estimated resident population of the ACT at 30 June 1996 was 307,500, an increase of 1,100 in the June quarter and 3,400 since 30 June 1995. The growth rate during the 12 months to June 1996 was 1.13% compared to the growth rate of 1.06% for the preceding 12 month period. The slightly higher growth rate in 1995-96 was mainly due to a rise in natural increase (excess of births over deaths).
- State accounts** Trend gross State product at average 1989-90 prices for the ACT decreased by 0.9% in the September quarter 1996 to \$2,142 million. In trend current prices there was slight growth of 0.4% from the previous quarter and 6.0% growth from the corresponding quarter in the previous year. The trend State final demand at average 1989-90 prices continued to decline over the last four quarters to \$2,884 million in the September quarter 1996. The trend public gross fixed capital expenditure at constant prices was the major contributor to the decline in the September quarter, decreasing by 11.6%.
- Labour force** The trend number of persons employed in the ACT has fallen for each of the last 15 months from a peak of 159,700 persons in October 1995 to 151,200 persons in December 1996. Over the same period, the trend number of persons unemployed increased by 17.5% from 12,000 to 14,100 with the trend unemployment rate increasing from 7.0% to 8.6%. The trend unemployment rate had stabilised at 8.5% for the six months June 1996 to November 1996, and only in December 1996 has it shown signs of an increase. The trend participation rate has decreased from 74.3% to 70.7% over the period October 1995 to December 1996.
- Job vacancies** There were 1,400 job vacancies recorded in the ACT in November 1996; an increase of 55.6% from August 1996 and remained unchanged from November 1995. Job vacancies in the private sector increased by 80.0% over the quarter to 900 and in the public sector remained unchanged at 400.
- Industrial disputes** In September 1996, there were 142 working days lost per 1,000 employees in the ACT compared with 138 working days lost per 1,000 employees nationally. For the ACT, this was the highest rate of working days lost per thousand employees since the 145 reported for the year ended June 1988.
- Business expectations** Businesses in the ACT expect a short-term decline of 1.1% in the sales of goods and services in the March quarter 1997. This follows on from an anticipated weaker decline of 0.3% in the previous quarter. The expected national growth during the March quarter 1997 is 0.4%. In the medium term (December quarter 1996 - December quarter 1997), growth of 2.2% is expected for the ACT, which is below that of the national expectation of 3.1%.

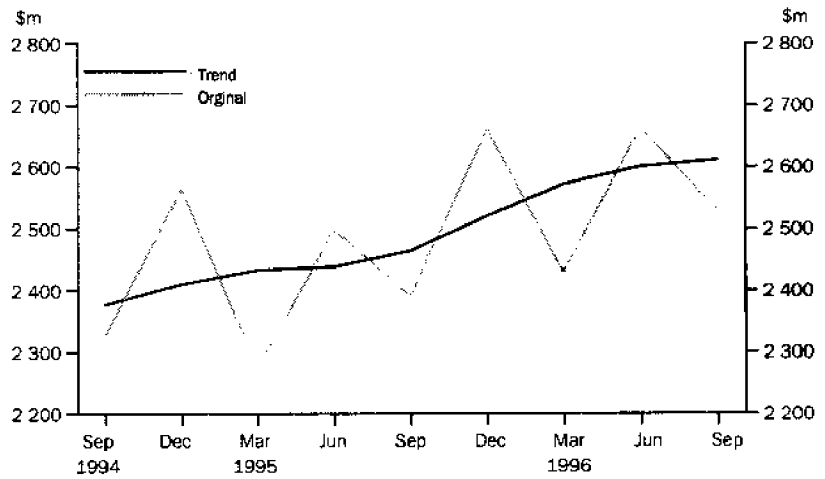
- Housing and construction The trend number of dwelling units approved in the ACT increased by 9.5% to 173 dwelling units in November 1996. This compares to 235 dwelling units approved in November 1995. Nationally the total number of dwelling units approved increased by 1.1% in November 1996.
- The trend number of dwelling units financed (includes refinancing) in the ACT during November 1996 dropped to 820 dwellings. Refinancing of established dwellings comprised 22.0% of the total number of dwelling units financed in November 1996, which was down 14.9% from the previous month. The trend estimate for the value of commitments in the ACT in November 1996 was \$84.9 million, a decrease of 0.1% on the previous month.
- The number of new residential housing commencements in the ACT decreased by 38.6% in the September quarter 1996 to 210. Nationally there was a slight decrease of 1.7% to 20,461.
- Retail turnover The trend estimate for retail turnover in the ACT for November 1996 was \$194.6 million, down on the previous month's figure of \$194.9 million. National and ACT trend retail turnover have both decreased by 0.2% since the previous month.
- Motor vehicle registrations The trend estimate for new motor vehicle registrations for the ACT in November 1996 was 857. The series has declined for each of the months since January 1996 which recorded 1,055 new vehicles registered. Nationally, the trend for total new registrations in November 1996 recorded its sixth consecutive monthly fall, representing a 2.8% decline since May 1996.

SELECTED BUSINESS INDICATORS

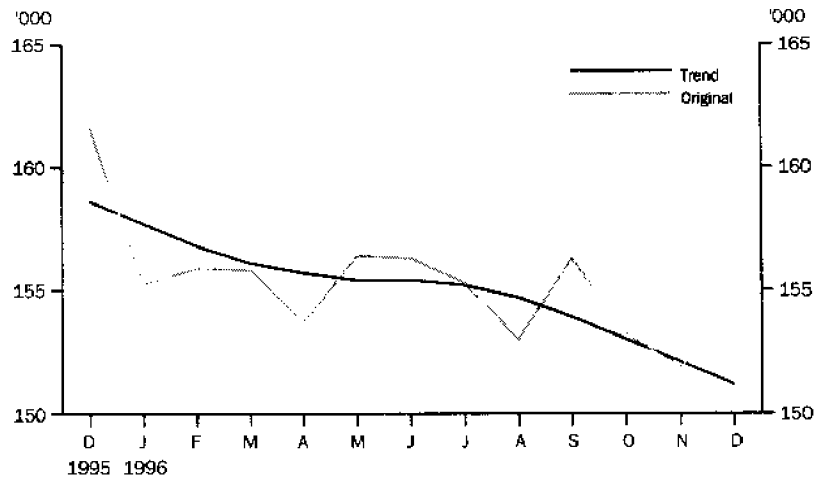
POPULATION GROWTH RATES



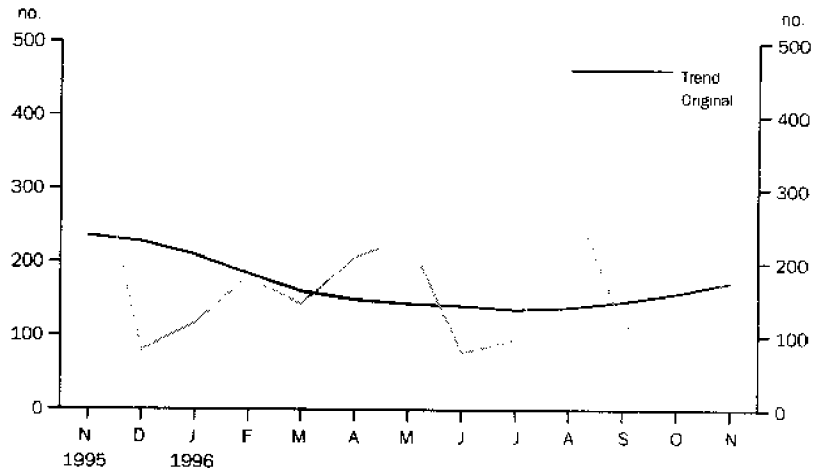
GROSS STATE PRODUCT AT CURRENT PRICES



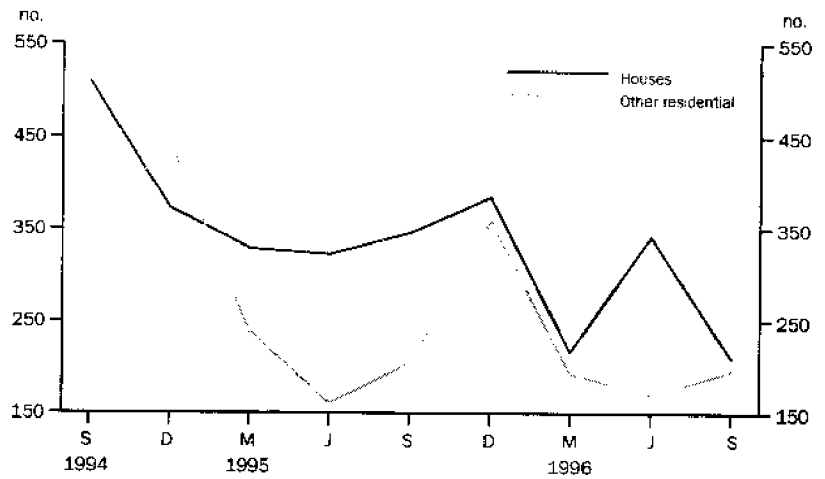
LABOUR FORCE — EMPLOYMENT



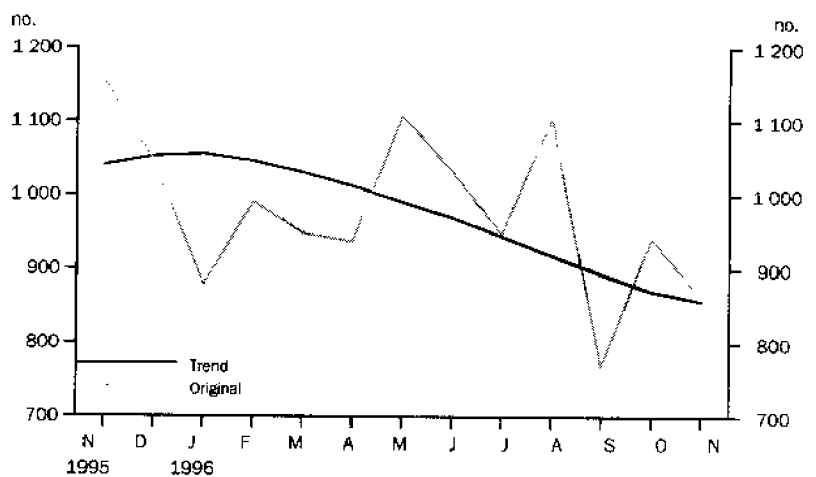
BUILDING APPROVALS —
DWELLING UNITS APPROVED



NEW BUILDING
COMMENCEMENTS



NEW MOTOR VEHICLE
REGISTRATIONS



In July 1996, the ACT labour force was estimated at 168,558 persons. In original terms, there were 13,249 unemployed persons, 19.4% more than in July 1995. The unemployment rate was 7.9% (original series), which was 1.4 percentage points higher than in July 1995. Some 78% of unemployed persons were looking for full-time work, of whom 59% were males. Females represented 58% of unemployed persons looking for part-time work.

Of unemployed persons (excluding persons who have been stood down) 64% in the ACT were registered with the Commonwealth Employment Service (CES) and also contacted prospective employers. A further 30% contacted prospective employers but were not registered with the CES. The national comparisons are 74% and 20% respectively.

The proportion of all unemployed persons registered with the CES was 68% in the ACT in July 1996. This compares with 78% of unemployed registered with the CES nationally. The proportion of full-time job seekers registered with the CES (81%) was significantly higher than that for part-time job seekers (15%). A similar pattern occurred nationally (88% and 36% respectively).

A higher proportion of unemployed males were registered with the CES (76%) than females (59%). Of those looking for full-time work, this difference was greatest in the 35-44 years age group (40 percentage points) with males representing the larger proportion. The smallest variation occurred in the 15-19 years age group (0.1 percentage points) with females representing the larger proportion.

The main difficulties in finding work most commonly reported were: no vacancies in line of work (20%); too many applicants for available jobs (15%); no vacancies at all (14%); and lacked necessary skills/education (14%). Of unemployed males 21% reported 'no vacancies in line of work' as the main difficulty in finding work. Of unemployed females, 20% reported 'insufficient work experience' as the main difficulty. In contrast nationally the most commonly reported difficulties were: considered too young or too old by employer (13%); too many applicants for available jobs (13%); and no vacancies at all (12%).

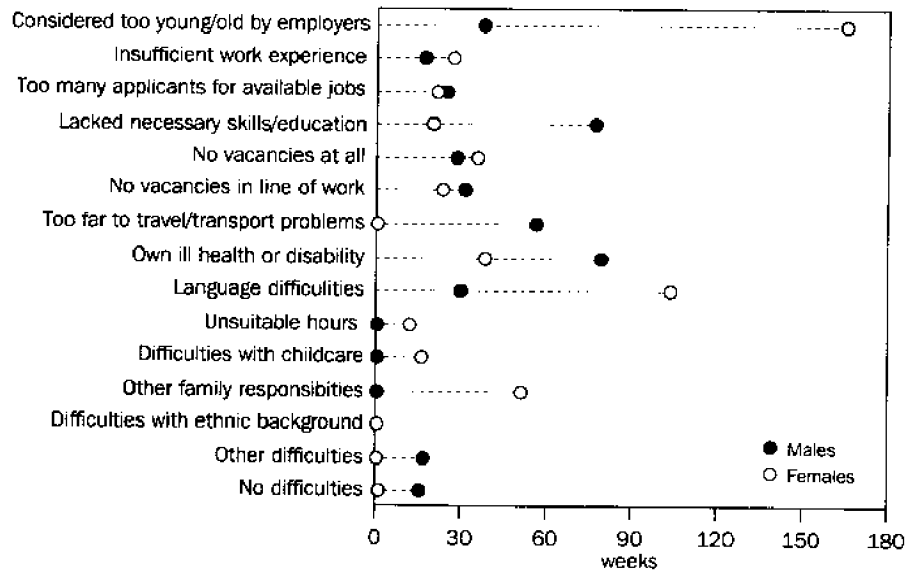
In July 1996 the average duration of unemployment for persons in the ACT was 37 weeks, this compares with the national average of 53 weeks. The average duration of unemployment for males was 38 weeks. The average duration of unemployment for females was lower at 35 weeks.

The main difficulties in finding work most commonly reported by the long-term unemployed (i.e. persons unemployed for a period of 52 weeks or more) were 'no vacancies in line of work' (21%) and 'lacked necessary skills/education' (20%). The majority (86%) of long-term unemployed persons in the ACT in July 1996 had not received any offers of employment in the previous 12 months.

In July 1996, 39% of unemployed had post-school qualifications. Of these 28% reported 'no vacancies in line of work' as the main difficulty in finding work. For those without post-school qualifications, the response was 'lacked necessary skills/education' (18%).

Also in July 1996, half of those who ceased full-time employment in the ACT in the last two years were retrenched from their jobs. The proportion of employees leaving voluntarily was 28%.

AVERAGE DURATION OF UNEMPLOYMENT AND MAIN DIFFICULTY FINDING WORK



1**AUSTRALIAN BUSINESS EXPECTATIONS: SALES, MARCH QUARTER
1997/DECEMBER QUARTER 1997, EXPECTED AGGREGATE CHANGE**

<i>Period</i>	<i>Australian Capital Territory</i>	<i>Australia</i>
	<i>%</i>	<i>%</i>
Short-term		
Dec qtr 1995-Mar qtr 1996	0.5	-0.2
Mar qtr 1996-Jun qtr 1996	1.8	2.3
Jun qtr 1996-Sep qtr 1996	0.4	1.6
Sep qtr 1996-Dec qtr 1996	-0.3	1.6
Dec qtr 1996-Mar qtr 1997	-1.1	0.4
Medium-term		
Dec qtr 1995-Dec qtr 1996	3.8	4.4
Mar qtr 1996-Mar qtr 1997	2.3	4.1
Jun qtr 1996-Jun qtr 1997	1.4	3.6
Sep qtr 1996-Sep qtr 1997	1.5	3.1
Dec qtr 1996-Dec qtr 1997	2.2	3.1

Indicator	Unit	Australian Capital Territory			Australia		
		Latest figure	Change from		Latest figure	Change from	
			Previous period	Same period previous year		Previous period	Same period previous year
POPULATION, VITAL AND LABOUR							
POPULATION Jun qtr 96	'000	307.5	0.4	1.1	18 289.1	0.3	1.3
Natural increase	no.	858	15.9	5.9	31 176	-10.2	-3.2
Net migration	no.	205	-75.1	-144.1	19 330	-45.3	-18.8
Total increase	no.	1 063	-31.9	208.1	50 506	-27.9	-9.8
LABOUR FORCE, Dec 96							
Original series							
Employed	'000	153.5	1.1	-5.0	8 496.5	1.2	0.8
Unemployed	'000	14.1	11.0	11.9	805.7	9.3	7.6
Unemployment rate(a)	%	8.4	0.7	1.2	8.7	0.6	0.5
Participation rate(a)	%	71.6	1.2	-3.7	64.3	1.1	-0.2
Long-term unemployed (Nov 96)	no.	3 288	4.0	-2.9	219 991	-3.2	-4.4
Long-term unemployed as percentage total unemployed (Nov 96)(a)	—	25.9	1.4	-2.5	29.8	0.1	-1.4
Trend series							
Employed	'000	151.2	-0.6	-4.7	8 395.7	0.1	1.0
Unemployed	'000	14.1	-0.7	13.7	796.1	—	4.0
Unemployment rate(a)	%	8.6	0.1	1.4	8.7	—	0.3
Participation rate(a)	%	70.7	-0.4	-3.2	63.6	—	-0.2
JOB VACANCIES, Nov 96	'000	1.4	55.6	—	62.3	-1.9	11.1
INDUSTRIAL DISPUTES IN PROGRESS, Sep 96							
Working days lost	'000	0.3	-88.9	—	34.0	-71.5	-15.6
Days lost per '000 employees (year ended Sep 96)	no.	142.0	—	1 928.6	138.0	-0.7	58.6
BUILDING AND CONSTRUCTION							
HOUSING FINANCE, Nov 96							
Secured commitments to individuals for							
Original series							
Construction of dwellings	\$m	6.7	-20.2	-11.8	512.3	-8.8	-4.9
Purchase of new dwellings	\$m	6.1	15.1	-40.2	226.4	6.9	16.6
Purchase of established dwellings	\$m	52.2	16.3	0.6	3 238.2	-2.5	2.2
Total housing commitments	\$m	80.3	4.3	-17.0	3 977.0	-2.9	2.0
Seasonally adjusted series							
Total housing commitments	\$m	84.3	14.4	-8.6	3 954.9	-0.3	6.9
Trend series							
Dwelling units financed	no.	820	-1.8	-3.2	40 194	0.1	5.1
Total housing commitments	\$m	84.9	-0.1	0.6	4 077.0	0.8	10.8
BUILDING APPROVALS, Nov 96							
Original series							
Dwelling units	no.	184	84.0	-54.0	11 205	-5.2	1.3
Value of new residential	\$m	20.1	82.7	-50.4	1 128.4	-1.3	4.2
Value of residential alterations and additions	\$m	2.5	-40.5	-51.0	236.3	5.4	12.2
Value of non-residential	\$m	23.7	69.3	28.8	1 709.0	23.4	92.1
Value of total building	\$m	46.3	58.6	-27.5	3 073.7	11.7	40.8
Trend series							
Dwelling units	no.	173	9.5	-26.4	10 822	1.1	6.2
BUILDING COMMENCEMENTS, Sep qtr 96							
New houses	no.	210	-38.6	-39.3	20 461	-1.7	-14.1
Value of houses commenced	\$m	25.6	-28.7	-31.0	2 202.3	-0.2	-9.4
Value of non-residential building commenced	\$m	108.8	-26.4	76.3	2 936.6	0.3	19.3
Value of total commencements	\$m	156.2	-26.7	12.9	6 556.6	-2.0	1.1
PRICE INDEXES							
Established house price index, Sep qtr 96 (1989-90=100.0)		127.2	-0.2	-0.6	114.0	0.4	1.2

For footnotes see end of table.

Indicator	Unit	Australian Capital Territory			Australia		
		Latest figure	Change from		Latest figure	Change from	
			Previous period	Same period previous year		Previous period	Same period previous year
PRICES, WAGES AND CONSUMER SPENDING							
CPI, Sep qtr 96 1989-90=100.0							
Food	(1989-90=100.0)	120.3	0.6	2.6	118.3	1.0	2.5
Housing	(1989-90=100.0)	112.0	-0.4	0.6	106.1	-0.2	0.7
Transportation	(1989-90=100.0)	128.9	-0.8	1.7	123.4	-0.3	1.1
All groups	(1989-90=100.0)	121.4	—	1.9	120.1	0.3	2.1
AVERAGE WEEKLY EARNINGS, Aug 96							
Original series							
Males	\$	762.0	2.6	4.0	673.5	0.3	2.9
Females	\$	545.6	0.8	6.7	445.1	0.9	3.6
Persons	\$	647.7	1.0	3.9	566.6	0.4	3.4
Trend series							
Males	\$	756.2	0.5	2.7	676.2	0.7	2.8
Females	\$	550.5	2.6	6.5	446.4	1.2	3.6
Persons	\$	648.3	1.0	3.5	569.2	0.9	3.3
RETAIL TURNOVER, Nov 96							
Original series							
Food retailing	\$m	81.1	1.0	6.9	4 276.4	-0.6	4.2
Department stores	\$m	25.2	10.5	-0.4	1 081.8	15.8	1.3
Hospitality and services	\$m	31.4	-1.6	7.5	1 741.9	0.2	-4.1
All other retailing	\$m	66.0	8.0	9.1	3 510.8	2.3	2.7
Total	\$m	203.7	3.9	6.7	10 610.9	2.0	1.9
Trend series							
Food retailing	\$m	79.1	-0.8	6.0	4 219.7	0.2	5.0
Department stores	\$m	23.5	-0.4	-2.1	958.4	-0.2	-0.6
Hospitality and services	\$m	30.2	-0.3	6.7	1 675.7	-0.9	-4.7
All other retailing	\$m	61.8	0.8	6.7	3 340.5	-0.4	2.4
Total	\$m	194.6	-0.2	5.3	10 194.3	-0.2	1.9
TOURISM AND TRANSPORT							
HOTELS, MOTELS AND GUEST HOUSE ACCOMMODATION, Jun qtr 96							
Original series							
Room nights	'000	215.9	8.9	3.2	8 788.8	-3.9	3.0
Takings at current prices	\$m	20.3	12.8	5.7	835.8	-4.3	10.5
Takings at 1989-90 prices	\$m	16.7	12.1	1.8	697.0	-5.0	7.1
Room occupancy rate (Sep qtr 96)(a)	%	57.5	-6.0	-5.2	56.1	-2.9	—
Seasonally adjusted series							
Room nights	'000	223.7	10.7	2.8	9 178.8	-0.2	3.0
Takings at current prices	\$m	20.7	15.0	5.1	888.4	1.8	10.6
Takings at 1989-90 prices	\$m	17.1	14.8	2.4	740.9	1.1	7.1
Trend series							
Room nights	'000	214.7	2.8	-0.5	9203.1	0.5	2.9
Takings at current prices	\$m	19.6	3.7	1.6	888.4	2.3	10.3
Takings at 1989-90 prices	\$m	16.1	3.2	-1.8	739.9	1.6	6.7
NEW MOTOR VEHICLE REGISTRATIONS, Nov 96							
Motor vehicles	no.	862	-8.5	-25.2	54 425	-2.4	4.8
Seasonally adjusted motor vehicles	no.	850	-5.0	-22.1	54 946	6.3	9.9
Trend motor vehicles	no.	857	-1.5	-17.6	53 356	-0.2	3.6

For footnotes see end of table.

Indicator	Australian Capital Territory				Australia		
	Unit	Latest figure	Change from		Latest figure	Change from	
			Previous period	Same period previous year		Previous period	Same period previous year
AGGREGATE INDICATORS							
STATE ACCOUNTS, Sep qtr 96(b)							
Original series							
Gross State product at av. 1989-90 prices	\$m	2 076	-6.1	1.3	108 823	1.5	4.1
Gross State product at current prices	\$m	2 528	-5.1	5.7	123 107	0.6	5.5
State final demand at av. 1989-90 prices	\$m	2 806	-9.3	-4.5	107 822	-1.8	3.2
Private final consumption expenditure	\$m	1 449	2.0	3.1	77 875	1.9	4.6
Private gross fixed capital expenditure	\$m	175	-11.6	-3.3	20 307	-1.1	6.5
Trend series							
Gross State product at av. 1989-90 prices	\$m	2 142	-0.9	2.0	110 058	0.5	3.8
Gross State product at current prices	\$m	2 611	0.4	6.0	125 420	1.1	5.9
State final demand at av. 1989-90 prices	\$m	2 884	-2.6	-3.4	108 871	0.5	3.5
Private final consumption expenditure	\$m	1 435	0.7	3.5	78 064	0.9	5.2
Private gross fixed capital expenditure	\$m	185	-4.6	-1.1	20 437	2.4	7.6

(a) Change shown in terms of percentage points.

(b) State estimates are not comparable to national estimates for June quarter 1995 due to revised aggregates in *Australian National Accounts, State Accounts* (5242.0).

Source: ABS Catalogue Nos: 3101.0, 5242.0, 5609.0, 6202.0, 6203.0, 6302.0, 6321.0, 6354.0, 6401.0, 6408.0, 6416.0, 8501.0, 8634.0, 8635.8, 8731.0, 8752.0, 9214.0, 9301.0.

3

AUSTRALIAN CAPITAL TERRITORY IN RELATION TO THE REST OF AUSTRALIA

Indicator	Unit	Latest period	NSW	Vic.	Qld	SA	WA	Tas.	NT	ACT	Aust.
POPULATION											
Employed persons (trend)	'000	Jun qtr 96p	6 190.2	4 541.0	3 354.7	1 479.2	1 762.7	473.4	177.7	307.5	18 289.1
Unemployment rate (trend)	%	Dec 96	7.7	9.4	9.6	9.6	7.6	10.6	4.5	8.6	8.7
STATE ACCOUNTS(a)											
Gross State product at 1989-90 prices (trend)	\$m	Sep qtr 96	37 493	28 737	18 211	7 550	12 278	2 181	1 242	2 142	110 058
Gross State product at current prices (trend)	\$m	Sep qtr 96	43 774	32 691	20 273	8 816	13 125	2 623	1 357	2 611	125 420
BUILDING APPROVALS											
Dwelling units approved	no.	Nov 96	4 080	1 874	2 855	488	1 328	168	228	184	11 205
Dwelling units approved (trend)	no.	Nov 96	3 603	1 961	2 837	532	1 302	161	192	173	10 822
Value of non-residential building approved	\$m	Nov 96	880.8	284.0	266.2	39.7	165.0	7.3	8.4	23.7	1 709.0
Value of all buildings approved	\$m	Nov 96	1 430.6	531.2	580.7	88.5	304.6	24.0	33.9	46.3	3 073.7
ENGINEERING CONSTRUCTION											
Value of engineering construction work done	\$m	Jun qtr 96	1 435.8	650.8	792.3	225.7	856.2	66.2	47.7	39.9	4 114.7
AVERAGE WEEKLY EARNINGS											
Full-time adult ordinary time (trend)	\$	Aug 96	713.4	664.8	629.1	636.0	691.7	635.3	678.2	780.7	677.9
RETAIL TRADE											
Retail turnover (trend)	\$m	Nov 96	3 666.6	2 355.4	1 854.1	751.9	1 016.3	244.9	110.6	194.6	10 194.3
HOTELS, MOTELS AND GUEST HOUSE ACCOMMODATION											
Room nights occupied (trend)	'000	Jun qtr 96	3 148.7	1 509.1	2 421.4	527.9	828.9	260.3	292.1	214.7	9 203.1
NEW MOTOR VEHICLE REGISTRATIONS											
Trend	no.	Nov 96	17 971	13 617	10 113	3 286	5 673	1 267	570	857	53 356
CONSUMER PRICE INDEX											
Food	Unit	Latest period	Syd.	Melb.	Bris.	Adel.	Perth	Hob.	Dar.	Canb.	Aust.
Housing	(1989-90=100.0)	Sep qtr 96	118.2	117.5	117.7	119.2	120.3	120.0	119.1	120.3	118.3
Transportation	(1989-90=100.0)	Sep qtr 96	110.4	99.6	112.4	103.5	101.0	107.4	121.7	112.0	106.1
All Groups	(1989-90=100.0)	Sep qtr 96	124.0	123.1	122.2	124.4	122.0	119.7	121.9	128.9	123.4
Average retail prices (cents)	(1989-90=100.0)	Sep qtr 96	120.2	119.6	120.6	122.2	118.3	121.1	121.6	121.4	120.1
Milk, carton, supermarket sales	1 litre	Sep qtr 96	114	125	114	114	124	120	116	109	n.a.
Bread, white loaf, sliced, supermarket sales	680 g	Sep qtr 96	195	192	193	154	184	167	194	182	n.a.
Beef, rump steak	1 kg	Sep qtr 96	1 221	1 107	1 056	1 123	1 082	1 074	1 289	1 048	n.a.
Chicken, frozen	1 kg	Sep qtr 96	307	352	342	369	346	397	383	322	n.a.
Potatoes	1 kg	Sep qtr 96	86	94	90	67	120	78	109	83	n.a.
Coffee, instant (jar)	150 g	Sep qtr 96	572	568	572	509	574	617	565	566	n.a.
Scotch nip, public bar	30 ml	Sep qtr 96	317	283	251	329	324	241	310	282	n.a.
Private motoring petrol, leaded	1 litre	Sep qtr 96	72.8	73.6	66.4	73.6	74.6	76.2	79.4	76.2	n.a.
Private motoring petrol, unleaded	1 litre	Sep qtr 96	70.7	71.5	62.2	71.3	72.5	74.1	77.4	74.0	n.a.

(a) State estimates are not comparable to n.a.tion.a.i. estimates for June quarter 1995 due to revised aggregates in Australian n.a.tion.a.i. Accounts, State Accounts (5242.0).

4

AUSTRALIAN CAPITAL TERRITORY IN RELATION TO THE REST OF AUSTRALIA — PERCENTAGE CHANGES

Indicator	Latest period	NSW	Vic.	Qld	SA	WA	Tas.	NT	ACT	Aust.
POPULATION	Jun qtr 96p	0.3	0.2	0.5	0.1	0.4	—	0.1	0.4	0.3
LABOUR FORCE										
Employed persons (trend)	Dec 96	0.1	0.2	0.1	-0.1	0.1	-0.6	-0.4	-0.6	0.1
Unemployment rate (trend)(a)	Dec 96	-0.1	—	—	—	—	—	-0.1	0.1	—
STATE ACCOUNTS(b)										
Gross State product at 1989-90 prices (trend)	Sep qtr 96	0.9	0.2	1.3	—	0.3	-0.5	0.4	-0.9	0.5
Gross State product at current prices (trend)	Sep qtr 96	1.6	1.0	1.3	-0.3	—	0.9	0.8	0.4	1.1
BUILDING APPROVALS										
Dwelling units approved	Nov 96	6.6	-19.4	-13.5	-13.8	-0.7	-11.6	34.9	84.0	-5.2
Dwelling units approved (trend)	Nov 96	—	-1.4	1.3	2.3	2.5	2.5	7.9	9.5	1.1
Value of non-residential building approved	Nov 96	17.5	38.9	37.0	39.3	17.0	-31.1	-79.9	69.3	23.4
Value of all buildings approved	Nov 96	16.1	8.5	7.0	5.1	8.8	-23.8	-45.8	58.6	11.7
ENGINEERING CONSTRUCTION										
Value of engineering construction work done	Jun qtr 96	17.5	8.3	17.4	13.9	46.2	-15.3	13.0	33.9	19.9
AVERAGE WEEKLY EARNINGS										
Full-time adult ordinary time (trend)	Aug 96	1.4	0.3	1.1	0.7	0.7	0.9	1.1	0.7	1.0
RETAIL TRADE										
Retail turnover (trend)	Nov 96	-0.4	0.5	-0.6	-0.9	—	0.2	-1.1	-0.2	-0.2
HOTELS, MOTELS AND GUEST HOUSE ACCOMMODATION										
Room nights occupied (trend)	Jun qtr 96	—	0.8	0.6	1.4	1.2	-2.6	-0.5	2.8	0.5
NEW MOTOR VEHICLE REGISTRATIONS										
Trend	Nov 96	-0.8	1.6	-1.0	-0.8	-0.6	0.8	-0.7	-1.5	-0.2
	Latest period	Syd.	Melb.	Bris.	Adel.	Perth	Hob.	Dar.	Canb.	Aust.
CONSUMER PRICE INDEX										
Food	Sep qtr 96	0.4	1.8	-0.1	0.7	2.1	1.4	0.4	0.6	1.0
Housing	Sep qtr 96	0.4	-0.8	-0.1	-0.4	-0.6	-0.2	—	-0.4	-0.2
Transportation	Sep qtr 96	-0.2	-0.3	0.1	-0.7	-1.5	-0.1	2.2	-0.8	-0.3
All Groups	Sep qtr 96	0.3	0.3	0.2	0.2	0.3	0.4	0.7	0.0	0.3
Average retail prices (cents)										
Milk, carton, supermarket sales	Sep qtr 96	0.9	3.3	—	0.9	3.3	—	0.9	2.8	n.a.
Bread, white loaf, sliced, supermarket sales	Sep qtr 96	0.5	10.3	1.6	9.2	2.2	9.9	2.1	-1.6	n.a.
Beef, rump steak	Sep qtr 96	-4.8	-0.8	-3.0	3.9	-0.6	-8.8	1.4	-4.5	n.a.
Chicken, frozen	Sep qtr 96	-7.0	1.1	10.0	6.0	4.5	6.7	0.3	6.6	n.a.
Potatoes	Sep qtr 96	3.6	-5.1	4.7	-4.3	6.2	1.3	-3.5	6.4	n.a.
Coffee, instant (jar)	Sep qtr 96	0.5	-0.2	-3.7	-3.6	0.5	-2.5	-5.5	-0.9	n.a.
Scotch nip, public bar	Sep qtr 96	0.3	3.3	—	2.5	—	3.0	1.0	1.4	n.a.
Private motoring petrol, leaded	Sep qtr 96	-2.9	-0.7	0.2	-3.0	-2.4	-1.6	—	-3.2	n.a.
Private motoring petrol, unleaded	Sep qtr 96	-3.2	-0.6	-3.0	-3.1	-2.4	-1.7	—	-3.3	n.a.

(a) Change shown in terms of percentage points.

(b) State estimates are not comparable to national estimates for June quarter 1995 due to revised aggregates in Australian National Accounts, State Accounts (5242.0).

